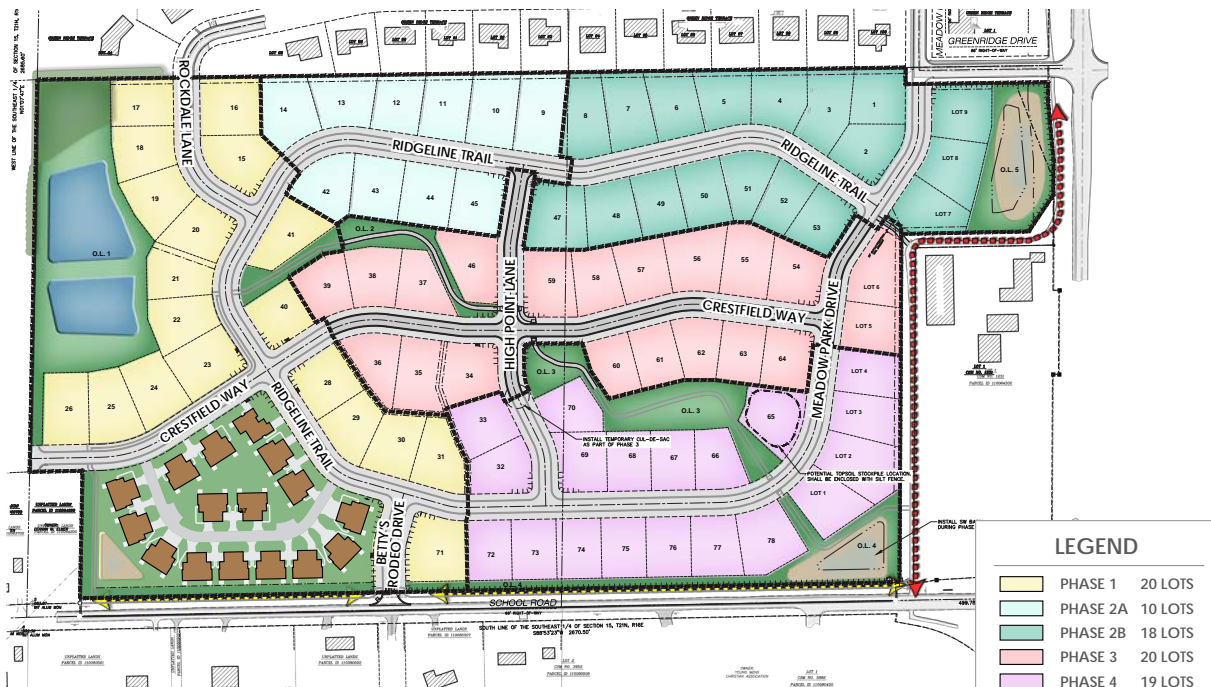
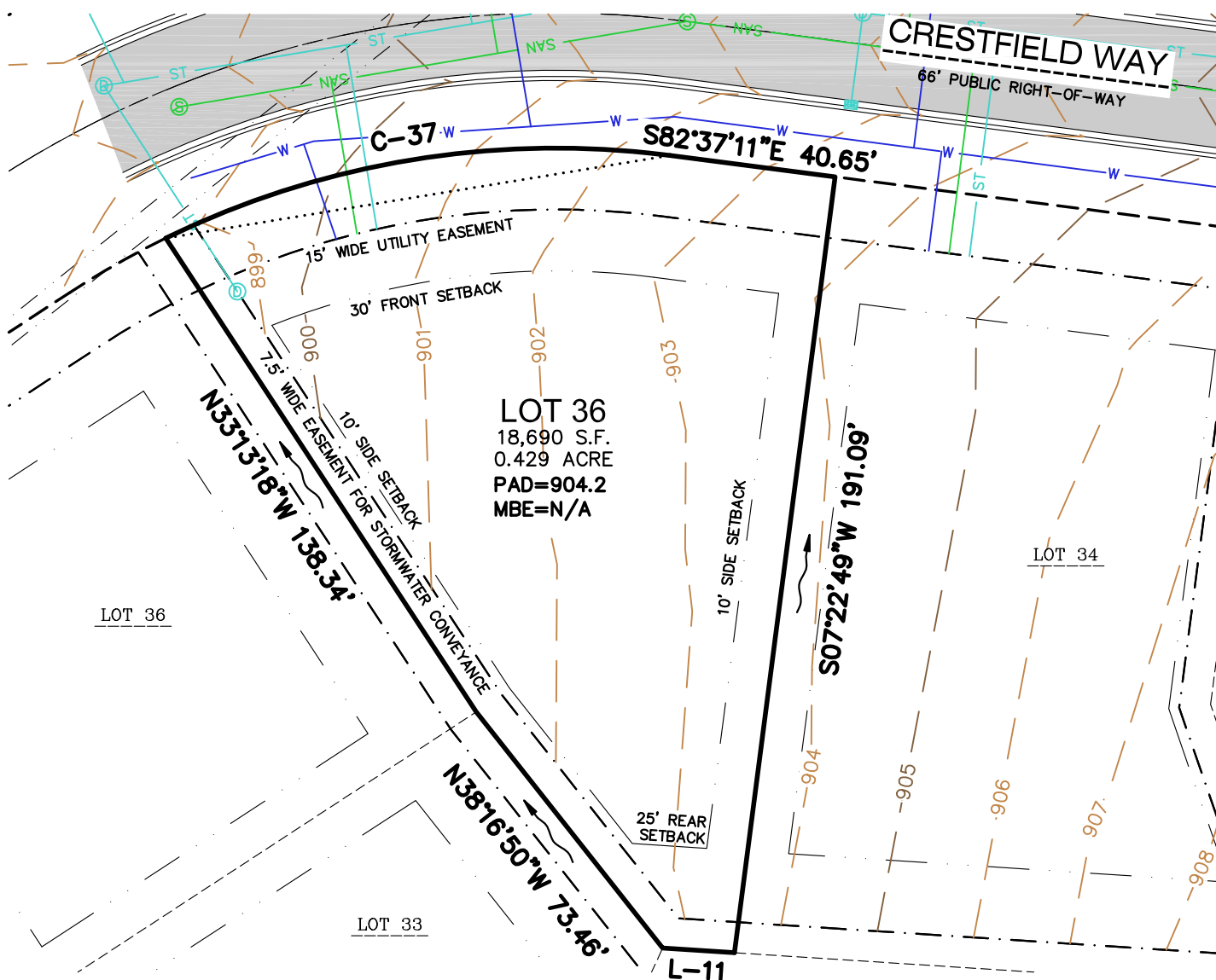


LOT NUMBER	Lot 36
LOT PRICE	\$86,900
LOT SIZE	18,731 square feet
ADDRESS	TBD
MUNICIPALITY	Town of Greenville, WI
SCHOOL DISTRICT	Hortonville Area Schools

The **Town of Greenville** offers residents the ideal blend of rural community and urban connectivity. The **Fox Highlands** subdivision offers large home sites and is located just minutes from Appleton, the Appleton International Airport, and the Fox River Mall. Home sites in **Fox Highlands** feature connectivity to existing subdivisions, parks, and trails offering residents year-round recreational opportunities.





LEGEND

	SANITARY MANHOLE		SUBJECT LOT LINE		NATURAL GAS
	WATER VALVE		CENTERLINE		EASEMENT LINE
	STORM MANHOLE		RIGHT-OF-WAY LINE		CONCRETE CURB & GUTTER
	CURB INLET		SETBACK LINE		DRAINAGE ARROWS
	ELECTRIC PEDESTAL		PROPERTY LINE		INDEX CONTOUR
	TELEPHONE PEDESTAL		SANITARY SEWER		INTERMEDIATE CONTOUR
	CABLE PEDESTAL		WATER LINE		MINIMUM BUILDING AREA ELEVATION
			STORM SEWER		MINIMUM BASEMENT ELEVATION

CURVE TABLE

CURVE	RADIUS	DELTA	CHORD BEARING	CHORD	ARC LENGTH
C-37	217.00'	33°24'03"	N80°40'47"E	124.72'	126.50'

LINE TABLE

LINE	DISTANCE	CHORD BEARING
L-11	17.57'	N86°17'41"W

NOTE: UTILITIES, CONTOURS, AND ROADWAY SHOWN AS PROPOSED.

