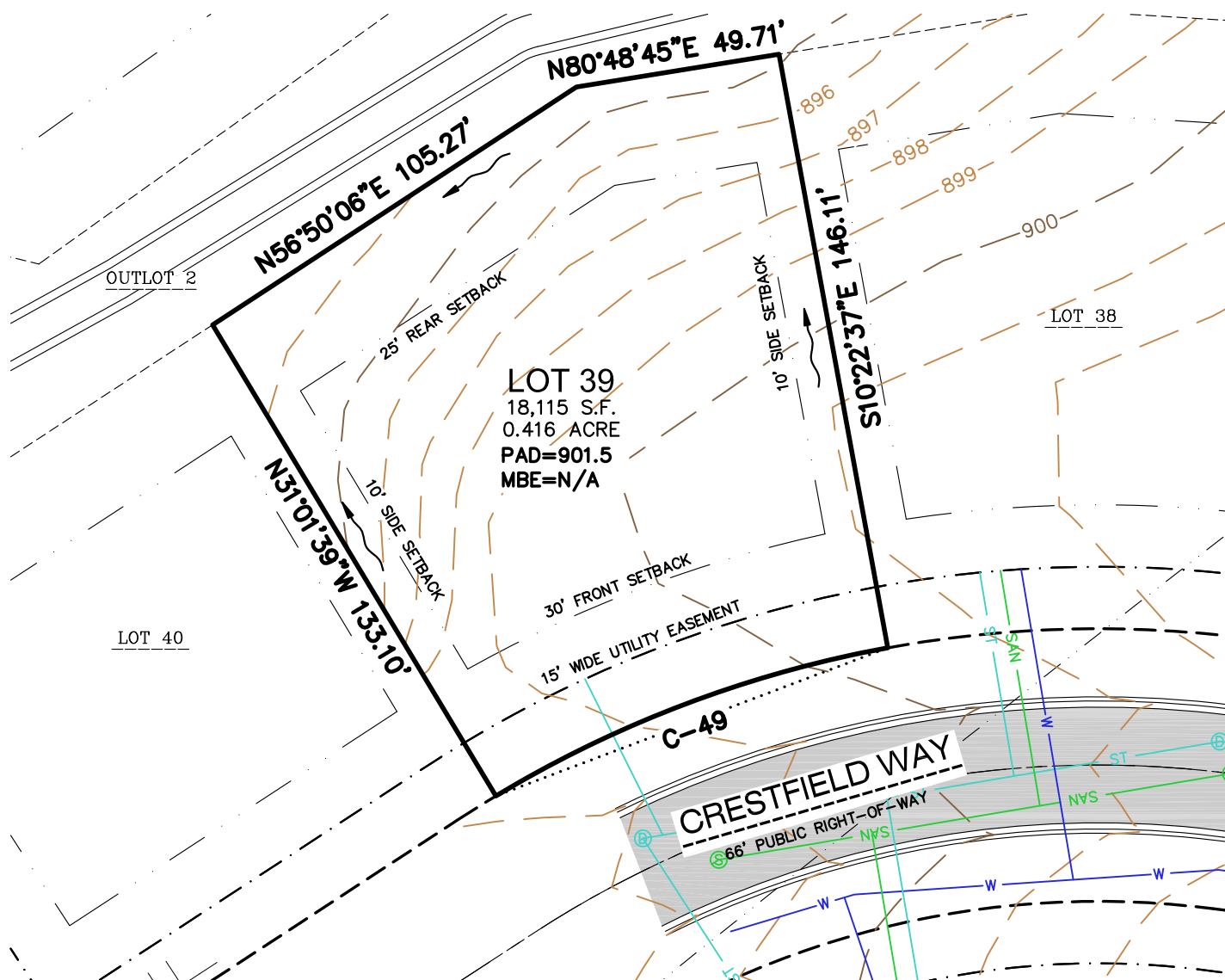


LOT NUMBER	Lot 39
LOT PRICE	\$89,900
LOT SIZE	18,295 square feet
ADDRESS	TBD
MUNICIPALITY	Town of Greenville, WI
SCHOOL DISTRICT	Hortonville Area Schools

The **Town of Greenville** offers residents the ideal blend of rural community and urban connectivity. The **Fox Highlands** subdivision offers large home sites and is located just minutes from Appleton, the Appleton International Airport, and the Fox River Mall. Home sites in **Fox Highlands** feature connectivity to existing subdivisions, parks, and trails offering residents year-round recreational opportunities.





## LEGEND

	SANITARY MANHOLE		SUBJECT LOT LINE		NATURAL GAS
	WATER VALVE		CENTERLINE		EASEMENT LINE
	STORM MANHOLE		RIGHT-OF-WAY LINE		CONCRETE CURB & GUTTER
	CURB INLET		SETBACK LINE		DRAINAGE ARROWS
	ELECTRIC PEDESTAL		PROPERTY LINE		INDEX CONTOUR
	TELEPHONE PEDESTAL		SANITARY SEWER		INTERMEDIATE CONTOUR
	CABLE PEDESTAL		WATER LINE	<b>PAD</b>	MINIMUM BUILDING AREA ELEVATION
			STORM SEWER	<b>MBE</b>	MINIMUM BASEMENT ELEVATION

## CURVE TABLE

CURVE	RADIUS	DELTA	CHORD BEARING	CHORD	ARC LENGTH
C-49	283.00'	20°39'03"	S69°17'52"W	101.45'	102.00'

**NOTE:** UTILITIES, CONTOURS, AND ROADWAY SHOWN AS PROPOSED.

