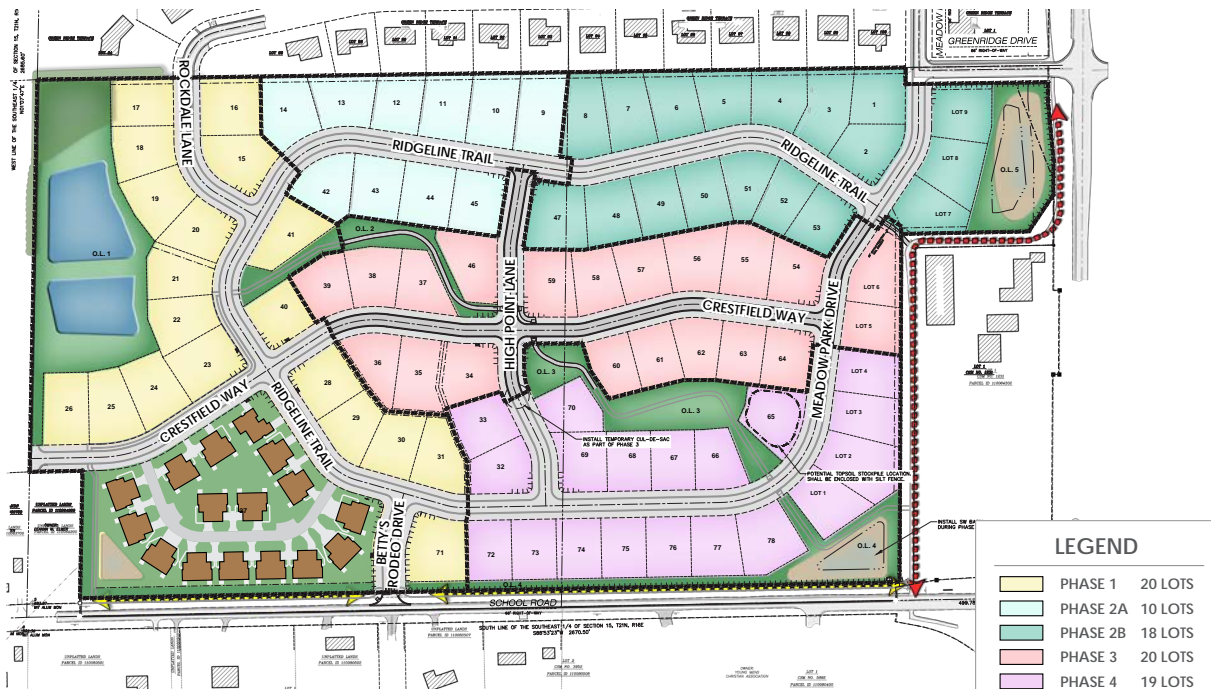
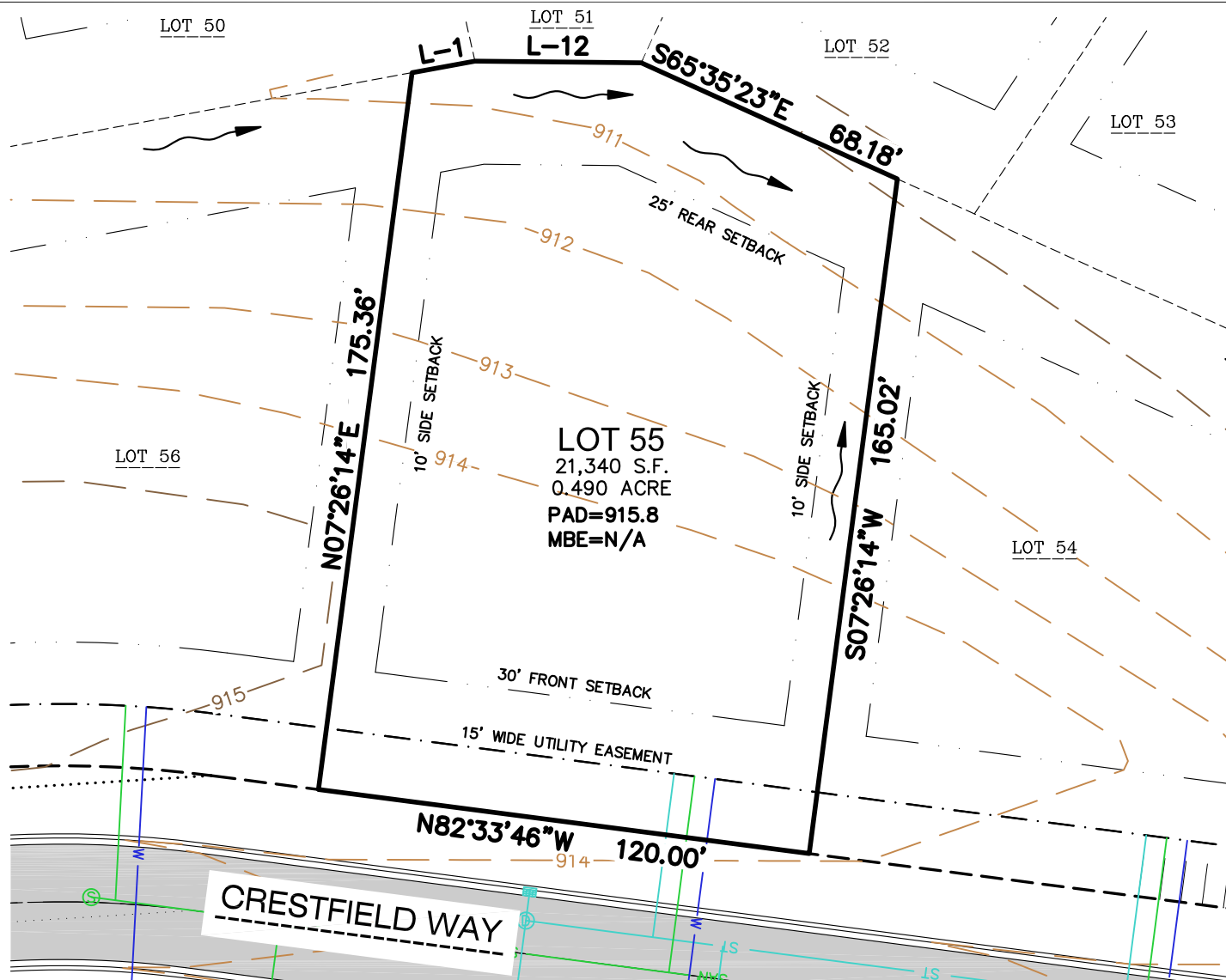


LOT NUMBER	Lot 55
LOT PRICE	\$89,900
LOT SIZE	21,780 square feet
ADDRESS	TBD
MUNICIPALITY	Town of Greenville, WI
SCHOOL DISTRICT	Hortonville Area Schools

The **Town of Greenville** offers residents the ideal blend of rural community and urban connectivity. The **Fox Highlands** subdivision offers large home sites and is located just minutes from Appleton, the Appleton International Airport, and the Fox River Mall. Home sites in **Fox Highlands** feature connectivity to existing subdivisions, parks, and trails offering residents year-round recreational opportunities.





## LEGEND

	SANITARY MANHOLE		SUBJECT LOT LINE		NATURAL GAS
	WATER VALVE		CENTERLINE		EASEMENT LINE
	STORM MANHOLE		RIGHT-OF-WAY LINE		CONCRETE CURB & GUTTER
	CURB INLET		SETBACK LINE		DRAINAGE ARROWS
	ELECTRIC PEDESTAL		PROPERTY LINE		INDEX CONTOUR
	TELEPHONE PEDESTAL		SANITARY SEWER		INTERMEDIATE CONTOUR
	CABLE PEDESTAL		WATER LINE	<b>PAD</b>	MINIMUM BUILDING AREA ELEVATION
			STORM SEWER	<b>MBE</b>	MINIMUM BASEMENT ELEVATION

## LINE TABLE

LINE	DISTANCE	CHORD BEARING
L-1	15.50'	N79°34'12"E
L-12	40.33'	S89°24'51"E

**NOTE:** UTILITIES, CONTOURS, AND ROADWAY SHOWN AS PROPOSED.

