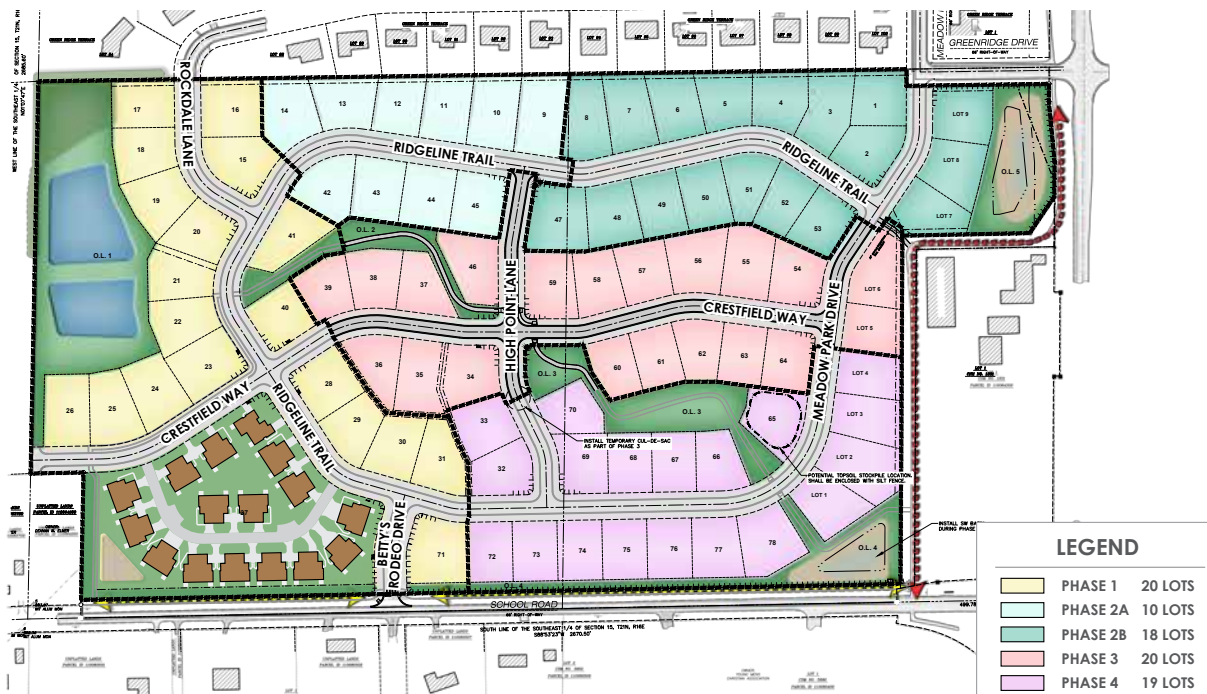
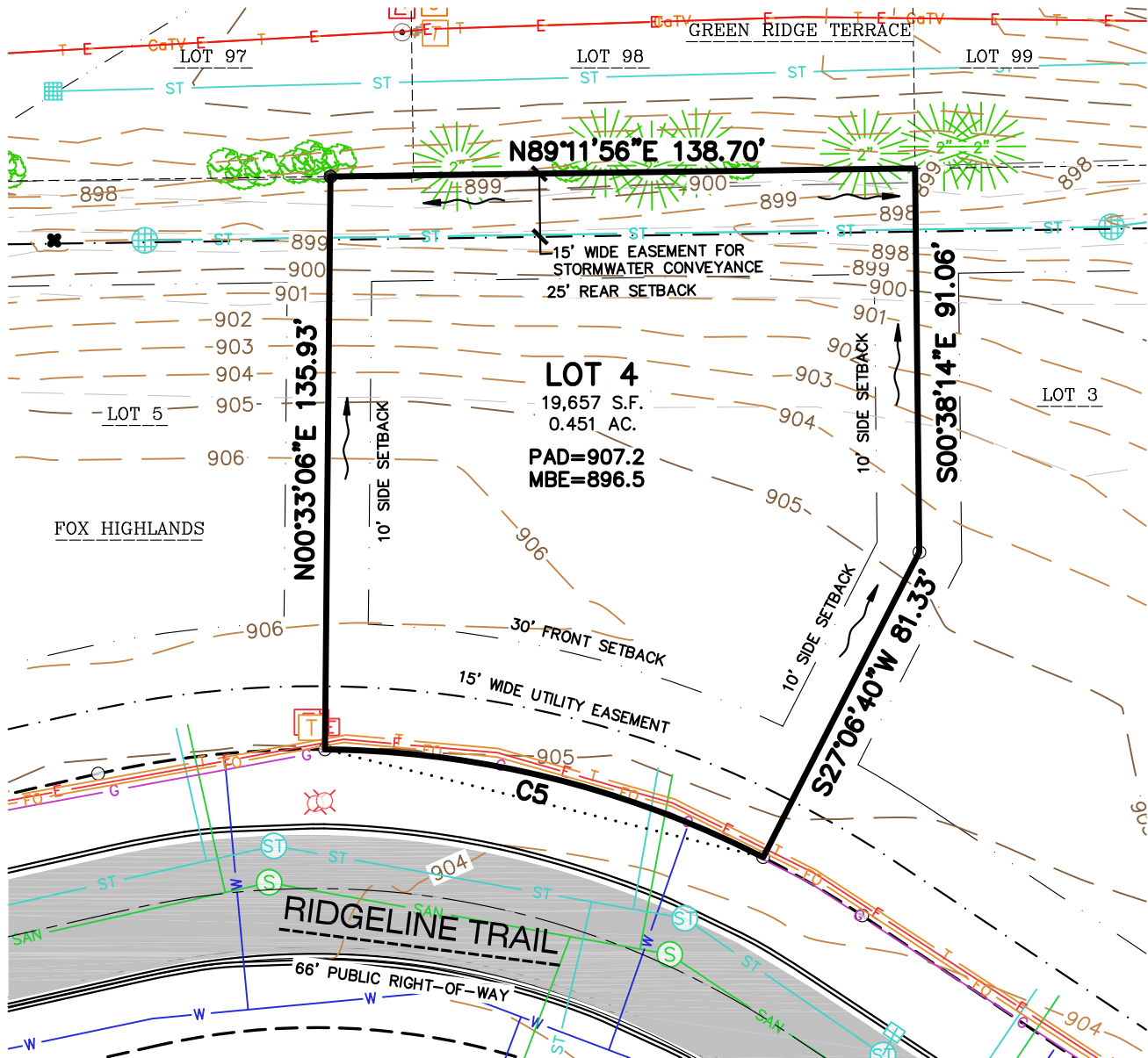


LOT NUMBER	Lot 4
LOT PRICE	\$75,900
LOT SIZE	19,657 square feet
ADDRESS	Ridgeline Trail
MUNICIPALITY	Town of Greenville, WI
SCHOOL DISTRICT	Hortonville Area Schools

The **Town of Greenville** offers residents the ideal blend of rural community and urban connectivity. The **Fox Highlands** subdivision offers large home sites and is located just minutes from Appleton, the Appleton International Airport, and the Fox River Mall. Home sites in **Fox Highlands** feature connectivity to existing subdivisions, parks, and trails offering residents year-round recreational opportunities.



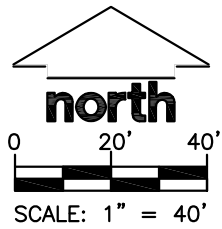


LEGEND

- SANITARY MANHOLE
- WATER VALVE
- STORM MANHOLE
- CURB INLET
- ELECTRIC PEDESTAL
- TELEPHONE PEDESTAL
- CABLE PEDESTAL
- SUBJECT LOT LINE
- CENTERLINE
- RIGHT-OF-WAY LINE
- SETBACK LINE
- PROPERTY LINE
- SANITARY SEWER
- WATER LINE

- STORM SEWER
- NATURAL GAS
- EASEMENT LINE
- CONCRETE CURB & GUTTER
- DRAINAGE ARROWS
- 905 INDEX CONTOUR
- 904 INTERMEDIATE CONTOUR
- PAD** MINIMUM BUILDING AREA ELEVATION
- MBE** MINIMUM BASEMENT ELEVATION

CURVE TABLE					
CURVE	RADIUS	DELTA	CHORD BEARING	CHORD	ARC LENGTH
C5	233.00'	26°33'34"	N76°10'07"W	107.04'	108.01'



File: I:\2016\167171\DWG\Survey\Survey Sheets\167171 Exhibit Lots.dwg Layout: Lot 4 User: cdarwin Plotted: Sep 23, 2020 - 11:04am

JSD Professional Services, Inc.
 Engineers • Surveyors • Planners
 MADISON REGIONAL OFFICE
 161 HORIZON COURT
 VERONA, WISCONSIN 53593
 (608)848-5060 PHONE | (608)848-2255 FAX
www.jsdinc.com

PROJECT:
FOX HIGHLANDS
 TOWN OF GREENVILLE
 OUTAGAMIE COUNTY, WI

SHEET TITLE:
LOT 4

JSD PROJECT NUMBER:
 16-7171
 DRAWN BY: EWO CHECKED BY: TJB
 DATE:
 SEP 23, 2020

SHEET NUMBER:
 1