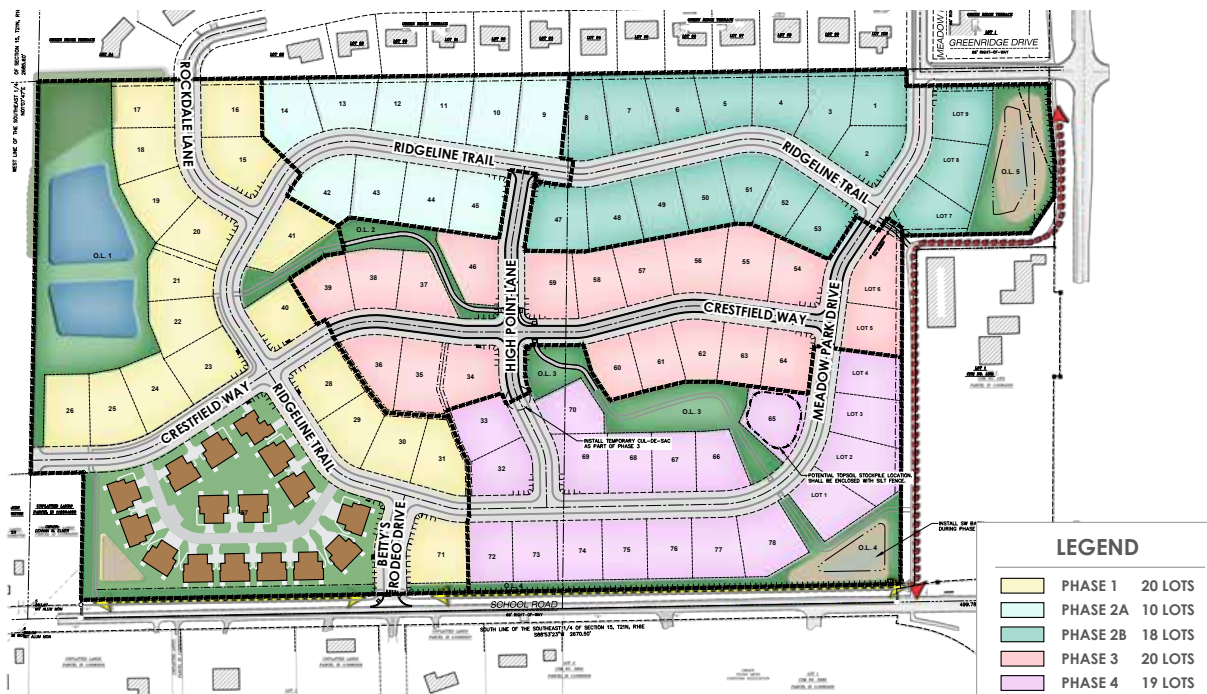
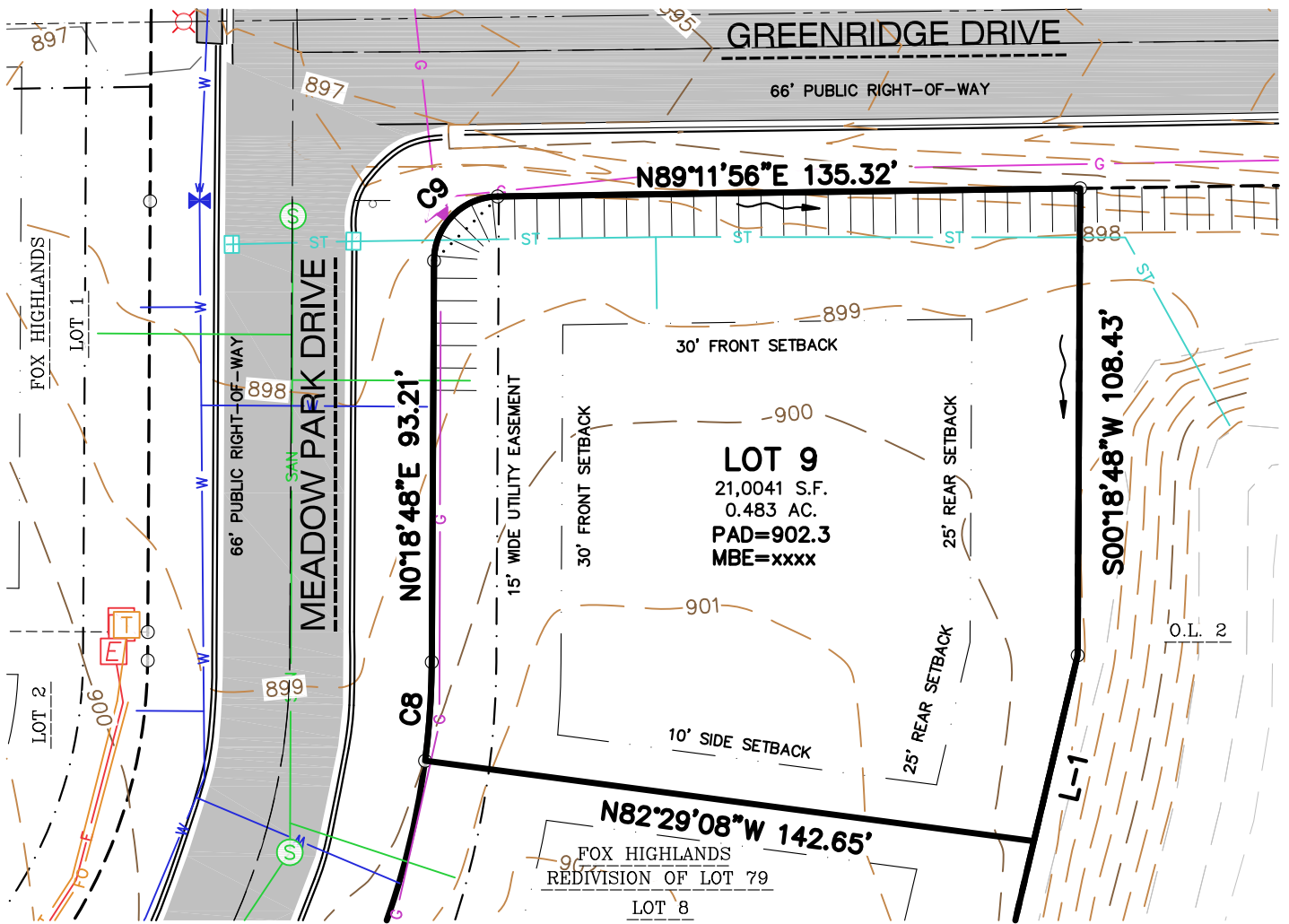


LOT NUMBER	Lot 9
LOT PRICE	\$74,900
LOT SIZE	21,004 square feet
ADDRESS	Meadow Park Drive
MUNICIPALITY	Town of Greenville, WI
SCHOOL DISTRICT	Hortonville Area Schools

The **Town of Greenville** offers residents the ideal blend of rural community and urban connectivity. The **Fox Highlands** subdivision offers large home sites and is located just minutes from Appleton, the Appleton International Airport, and the Fox River Mall. Home sites in **Fox Highlands** feature connectivity to existing subdivisions, parks, and trails offering residents year-round recreational opportunities.





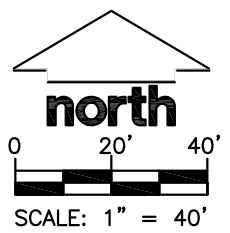
File: I:\2016\167171\DWG\Survey\Survey Sheets\167171 Exhibit Lots.dwg Layout: Lot 79 (9) User: Bkarns Plotted: Sep 23, 2020 - 4:09pm

LEGEND

- (S) SANITARY MANHOLE
- (W) WATER VALVE
- (ST) STORM MANHOLE
- [] CURB INLET
- [E] ELECTRIC PEDESTAL
- [T] TELEPHONE PEDESTAL
- [C] CABLE PEDESTAL
- SUBJECT LOT LINE
- CENTERLINE
- RIGHT-OF-WAY LINE
- SETBACK LINE
- PROPERTY LINE
- SAN --- SANITARY SEWER
- W --- WATER LINE
- ST --- STORM SEWER
- G --- NATURAL GAS
- EASEMENT LINE
- CONCRETE CURB & GUTTER
- DRAINAGE ARROWS
- 905 --- INDEX CONTOUR
- 904 --- INTERMEDIATE CONTOUR
- PAD --- MINIMUM BUILDING AREA ELEVATION
- MBE --- MINIMUM BASEMENT ELEVATION

LINE TABLE		
LINE	DISTANCE	CHORD BEARING
L-1	44.35'	S13°14'08"W

CURVE TABLE					
CURVE	RADIUS	DELTA	CHORD BEARING	CHORD	ARC LENGTH
C8	183.00'	07°12'04"	N03°54'50"E	22.98'	23.00'
C9	15.00'	88°53'09"	N44°45'22"E	21.01'	23.27'



JSD Professional Services, Inc.
 Engineers • Surveyors • Planners

MADISON REGIONAL OFFICE
 161 HORIZON COURT
 VERONA, WISCONSIN 53593
 (608)848-5060 PHONE | (608)848-2255 FAX

www.jsdinc.com

PROJECT:
FOX HIGHLANDS

TOWN OF GREENVILLE
 OUTAGAMIE COUNTY, WI

SHEET TITLE:
**REDIVISION OF LOT 79
 LOT 9**

JSD PROJECT NUMBER: 16-7171	SHEET NUMBER: 1
DRAWN BY: EWO	CHECKED BY: TJB
DATE: SEP 23, 2020	