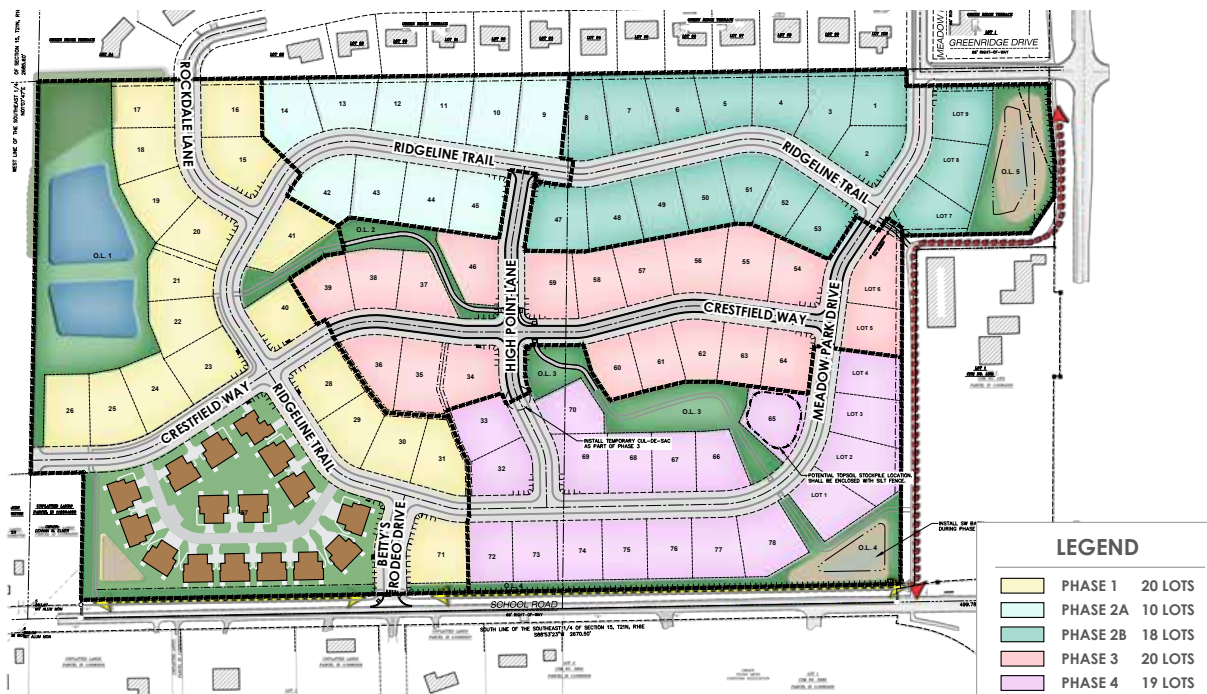
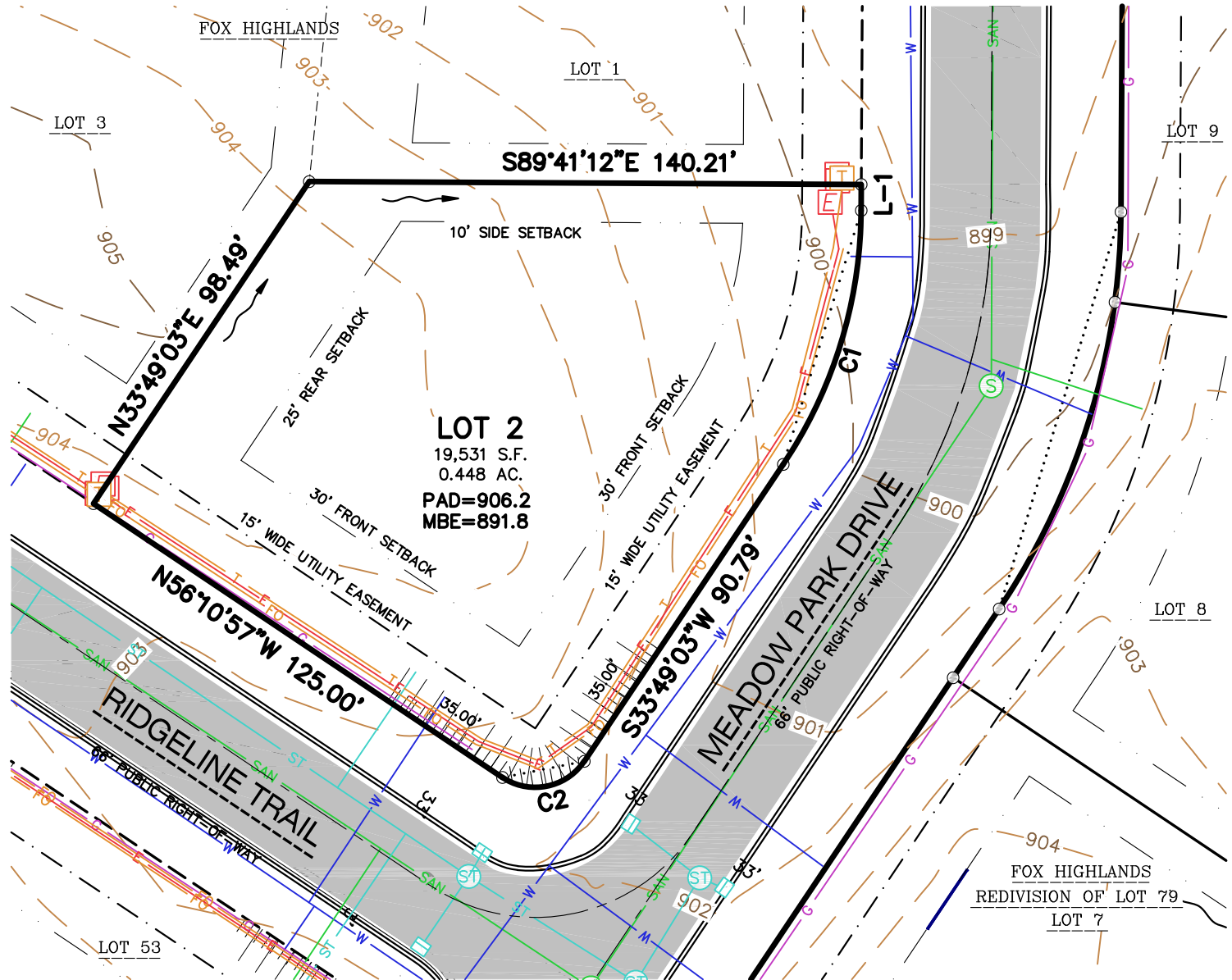


<b>LOT NUMBER</b>	Lot 2
<b>LOT PRICE</b>	\$69,900
<b>LOT SIZE</b>	19,531 square feet
<b>ADDRESS</b>	Ridgeline Trail
<b>MUNICIPALITY</b>	Town of Greenville, WI
<b>SCHOOL DISTRICT</b>	Hortonville Area Schools

The **Town of Greenville** offers residents the ideal blend of rural community and urban connectivity. The **Fox Highlands** subdivision offers large home sites and is located just minutes from Appleton, the Appleton International Airport, and the Fox River Mall. Home sites in **Fox Highlands** feature connectivity to existing subdivisions, parks, and trails offering residents year-round recreational opportunities.





**LINE TABLE**

LINE	DISTANCE	CHORD BEARING
L-1	6.61'	S00°18'48"W

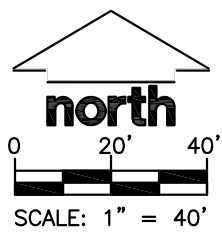
**CURVE TABLE**

CURVE	RADIUS	DELTA	CHORD BEARING	CHORD	ARC LENGTH
C1	117.00'	33°30'15"	S17°03'55"W	67.45'	68.42'
C2	15.00'	90°00'00"	S78°49'03"W	21.21'	23.56'

**LEGEND**

- SANITARY MANHOLE
- WATER VALVE
- STORM MANHOLE
- CURB INLET
- ELECTRIC PEDESTAL
- TELEPHONE PEDESTAL
- CABLE PEDESTAL
- SUBJECT LOT LINE
- CENTERLINE
- RIGHT-OF-WAY LINE
- SETBACK LINE
- PROPERTY LINE
- SANITARY SEWER
- WATER LINE
- STORM SEWER
- NATURAL GAS
- EASEMENT LINE
- CONCRETE CURB & GUTTER
- DRAINAGE ARROWS
- INDEX CONTOUR
- INTERMEDIATE CONTOUR

**PAD** MINIMUM BUILDING AREA ELEVATION  
**MBE** MINIMUM BASEMENT ELEVATION



**JSD Professional Services, Inc.**  
 Engineers • Surveyors • Planners  
 MADISON REGIONAL OFFICE  
 161 HORIZON COURT  
 VERONA, WISCONSIN 53593  
 (608)848-5060 PHONE | (608)848-2255 FAX  
 www.jsdinc.com

PROJECT:  
**FOX HIGHLANDS**  
 TOWN OF GREENVILLE  
 OUTAGAMIE COUNTY, WI

SHEET TITLE:  
**LOT 2**

JSD PROJECT NUMBER:  
 16-7171  
 DRAWN BY: EWO  
 CHECKED BY: TJB  
 DATE:  
 SEP 23, 2020

SHEET NUMBER:  
 1

File: I:\2016\167171\DWG\Survey\Survey Sheets\167171 Exhibit Lots.dwg Layout: Lot 2 User: cदारwin Plotted: Sep 23, 2020 - 11:01am